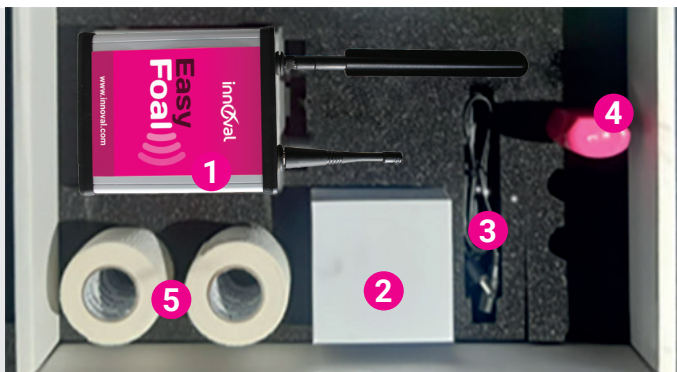


# EasyFoal

## QUICK INSTALLATION GUIDE

**YOU ARE NOW ONE OF THE USERS OF EASYFOAL : CONGRATS !**



### Legend :

- |                          |                        |
|--------------------------|------------------------|
| <b>1</b> Collector       | <b>4</b> Sensor        |
| <b>2</b> Power cable     | <b>5</b> Adhesive tape |
| <b>3</b> Extension cable |                        |

## How to start EasyFoal :

- 1** Add a SIM card to the collector by opening it (4 screws)
- 2** Connect the collector to power (use the extension cable if necessary)
- 3** Wait for the LED to flash green every 3 sec. (on the left side of the collector)
- 4** Check the phone reception by sending « Cellq? » by text to the phone number of EasyFoal  
 Answer :  
 < 6 : relocate your collector  
 6 to 11 : weak signal (it will work but try another spot)  
 > 11 : Correct
- 5** Change the language of EasyFoal : send  
 « LangEn » for English  
 « LangDe » for German  
 « LangEs » for Spanish
- 6** Add the sensor to the collector by sending « ASSO » followed by the sensor's number (eg : ASSO19496007)
- 7** Start the sensor with « START » followed by the sensor's number (eg : START19496007)

- 8** Check the communication between the collector and the sensor by sending « STATUT » followed by the sensor's number

**Answer :**  
 On stand by  
 Started  
 Stopped  
 Not Reached

If the answer is "Not Reached", check the sensor's number or bring it closer to the collector

- 9** Set up the alarms (2 texts and 2 calls max.)

#### Text messages :

Send « NUMMSA » followed by a phone number  
 Send « NUMMSB » followed by another phone number

#### Phone calls :

Send « NUMTELA » (or B) followed by a phone number

Do not forget to add your country code before your phone number

- 10** Test the system by sending « TEST » followed by a sensor's number. You should get a foaling alarm by text messages and phone calls as preset.



You can find a more detailed first installation guide in the user guide, from page 6 to 9.

# Fixing the sensor

1

Clean the mare's tail with absorbent paper so that it is clean and dry.



2

Unroll a first layer of adhesive tape around the tail and at the level of the anus and vulva (2 to 3 turns are enough). Be careful not to tighten it to avoid a tourniquet.



3

Position the sensor on the adhesive at the top of the vulva with the arrow visible and pointing upwards in line with the tail (do not position the sensor at the bottom of the vulva).



4

Attach the sensor with a second layer of adhesive tape loosely.



5

Tear the tape with your hand so that the tip is positioned under the tail or on the sides.



6

Apply the adhesive tape with your hand.



## MONITORING

The fixing system allows the sensor to remain in place for up to 15 days on average. However, the position of the sensor and the state of the tape must be checked regularly.

This is because some mares may scratch themselves.

If the sensor has gone down or sideways, it is recommended to reposition the sensor using a new bandage.

## RECEIVING ALERTS

On average, EasyFoal warns 10 to 20 minutes before foaling, so it is advisable to quickly go to the premises to check that the foaling is going well. déroulement de la mise bas.

**The sensor can be placed immediately on another mare after foaling.**

